



Newsletter | December 2025

We bring learning to life every month!



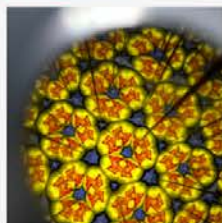
Georgia & South Carolina: Books Beyond the Classroom

Thanks to the Reimagining and Accelerating Literacy through Arts Integration (REALAI) grant, ArtsNOW completed the 2025 book distributions. More than 2,200 students from six REALAI schools received two new books and a bag of art-making supplies. Each grade-level book included a Creativity Task Card written by ArtsNOW Consultants with arts-integrated activities across art forms. Every bag included materials to support the activities. Students can now share literacy and arts integration experiences with their families at home, extending learning beyond the classroom.



Midlands, SC: Inspired Learning

Across Midlands schools, ArtsNOW experiences turned learning into hands-on, creative adventures. At **Logan Elementary**, teachers collaborated with Dance Consultant Melissa Joy to integrate dance into lessons. In Newberry County, Dance Consultant Simone Liberty aligned dance with core content at **Reuben Elementary School** and **Boundary Street Elementary School**. Montessori students explored shapes using claim-evidence-question, while fifth graders choreographed the New Deal through mind mapping. At **Newberry High School**, Visual Arts Consultant Shannon Green explored polygons through kaleidoscope creation. At **Kingstree Middle Magnet School**, Music Consultant Dr. Maribeth Yoder-White guided students in transforming *The Boy Who Cried Wolf* into original soundscapes, demonstrating how creativity strengthens learning.



Roswell, GA: The Gift of Reading

As part of our SmART Literacy grant activities in Fulton County schools, ArtsNOW was able to gift students at **Vickery Mill Elementary** with a book and a set of Creativity Task Cards at their annual Hootie's Holiday Feast. Funding for the books and task cards was made possible by the Joseph B. Whitehead Foundation. ArtsNOW team members were on site to greet hundreds of students and their family members and share resources that encourage reading and arts integration at home.



Atlanta and Douglasville, GA: RAISE Residencies

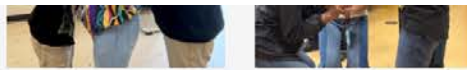
ArtsNOW Consultants Susie Spear Purcell and Shannon Green continued supporting students and teachers at **Hillside Conant School** and **Youth Villages Inner Harbor** through the RAISE grant. Consultants planned lessons with teachers to address content standards through arts integration while creating space for student expression. Lessons emphasized student voice, choice, and individuality through caring and responsive arts strategies. Teachers shared the value of these residencies and their positive impact on student well-being, reinforcing the role of arts integration in meaningful learning.



Georgetown, SC: Theatre Brings Joy

ArtsNOW Theatre Consultant Susie Purcell brought energy and creativity to students at **Carver's Bay Middle School** through dynamic theatre strategies. Students collaborated, planned, and performed tableau using movement and expression to deepen understanding. The room was filled with focus, laughter, and teamwork as groups brought ideas to life. Middle school students were fully engaged, demonstrating how arts integration supports active learning and joyful participation.





Atlanta, GA: Folk Art in Action

At Hope Hill Elementary, Visual Arts Consultant Stephanie Lancaster introduced teachers and students to the rich world of folk art. Through professional learning, teachers explored key art elements, identified characteristics of folk art, and made meaningful curriculum connections. First graders illustrated character traits from *The Tortoise and the Hare*. Second graders analyzed *Anansi the Spider* through symbolic representation. Third graders blended math and art using shape and size to represent three-digit numbers and to solve multiplication equations. The experience highlighted how arts integration deepens understanding through creativity and joyful discovery.



Duluth, GA: EASE Grant Kick-off

As an affiliate of National Young Audiences Arts for Learning, ArtsNOW is partnering with the Educational Advancement through STEM Engagement federal grant to support arts-integrated STEM instruction. The work launched with Deer Chase Elementary School and Ellen Woodside Elementary School during a kick-off session held at the ArtsNOW offices. Teachers met with ArtsNOW Consultants from each art form to plan arts-integrated instruction for the upcoming semester. Whole-group learning was led by ArtsNOW President & CEO Pamela Walker alongside David A. Dik, Executive Director of Young Audiences Arts for Learning, reinforcing collaboration and a shared vision for student learning.



Did someone forward you this email? You deserve your own copy. [Click here to sign up for our newsletter.](#) You can also share this newsletter with an educator, administrator, or donor who should know about ArtsNOW!

 Affiliated with the national Young Audiences for Learning network

Copyright © 2020 ArtsNOW. All rights reserved.

Our mailing address is:
2905 Premiere Parkway, Suite 125, Duluth, GA 30097

Want to change how you receive these emails?
You can [update your preferences](#) or [unsubscribe from this list](#).