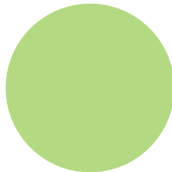




Our Year of Growth

ANNUAL REPORT 2022-23



Our Year of Growth

At ArtsNOW, our guiding purpose is to reshape learning in, and out of, the classroom. For over 20 years, ArtsNOW has transformed education through integrated learning and arts in education. By integrating visual, digital, and performing arts into all subjects, we set the stage for teachers to be more confident and effective in their teaching, leading to deeper student engagement for greater academic and personal achievement.

The 2022 - 2023 school year was exceptionally awe-inspiring and impact-affirming, as we regained full force with our in-person professional learning and classroom support, expanded our presence significantly into South Carolina, and launched our first annual Principals' Network Conference to further connect our ArtsNOW partners, community, and thought leaders through arts integration.

Our professional learning and in-classroom support were back stronger than ever! We welcomed 119 new schools and 18 new school districts into partnerships, and more than 14,000 new educators and administrators, impacting more than 30,000 students.

With a focus on growing our service footprint, ArtsNOW expanded our presence significantly into South Carolina, partnering in a state-wide collaboration with the South Carolina Arts Commission and Arts Grow South Carolina. With the goal of providing equitable access to learning in, and through the arts, ArtsNOW was able to serve over 380 teachers and 5,800 students.

ArtsNOW grew our programming in Savannah, Georgia by advancing our partnership with Georgia Institute of Technology's Center for Education Integrating Science, Mathematics, and Computing, better known as "CEISMIC", by adding additional learning opportunities for more than 400 students through STEAM Saturdays and Summer Steam Sessions.



One of our proudest, and most exciting, accomplishments was the premier of our first Principals' Network Conference in Greenville, South Carolina, which will now become an annual event. ArtsNOW hosted 50 participants from 17 school districts across the Southeast to gain insights, participate in presentations, and share best practices from arts integration leaders.

Looking toward the future of ArtsNOW, we are set on expanding our service footprint, exploring new regional and national partnerships, and significantly adding to our library of online resources for educators and families.

ArtsNOW is on our way to making great strides in advancing arts integration and integrated learning. With a focus on educators and students, and by emphasizing the arts in education, ArtsNOW continues to provide an engaging learning environment that promotes teacher confidence and improves student engagement.

Thank you for joining us as we continue to bring learning to life!

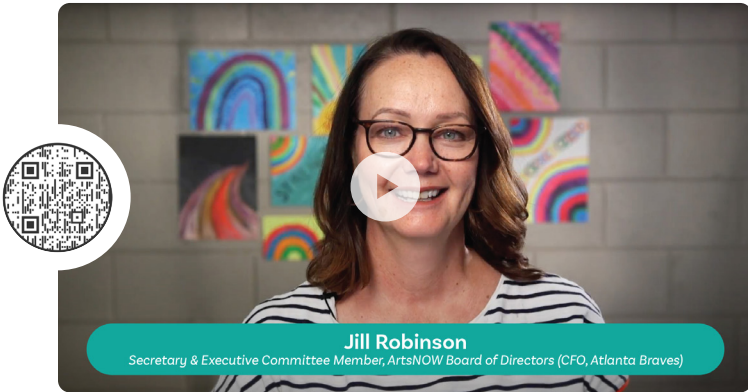
Pamela Walker

Pamela Walker, CEO/President

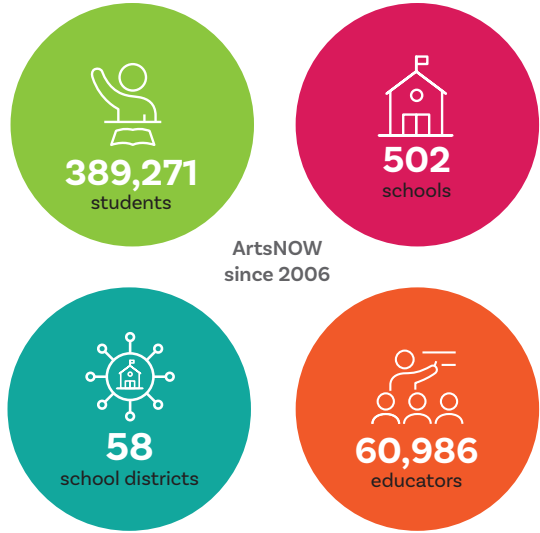


Scan the code or visit artsnowlearning.org/2022-annual-report to view the full report including partnership and grant stories!

HIGHLIGHTS



Scan the code or visit artsnowlearning.org/2022-annual-report/#from-our-board to view video of Jill Robinson, Secretary & Executive Committee member, ArtsNOW Board member (CFO Atlanta Braves) recapping ArtsNOW's 2022-23 accomplishments.



Premiering the Principals' Network Conference

In February 2023, ArtsNOW planned and hosted our first Principals' Network Conference in Greenville, South Carolina. 50 participants from 17 districts across the Southeast came together to experience insights, presentations, and best practices from education and arts integration thought leaders. As one of the distinguished guest speakers, David A. Dik, National Executive Director of Young Audiences Arts for Learning, spoke to the group about renewing and re-energizing leadership skills for the "new normal" in a post-pandemic world.

"The ArtsNOW Principals' Network Conference allowed needed time for a group of extraordinary school leaders who see the power of arts in their classrooms to reflect, rejuvenate, and rethink the challenges and opportunities they face." - David Dik, National Executive Director, Young Audiences

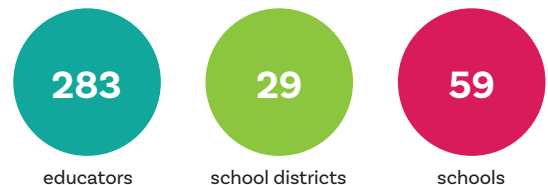


Gadsden team at Foundational Seminar

ArtsNOW Foundational Seminars

Each year, ArtsNOW Foundational Seminars host teams of educators (K-12) to explore arts-integrated instructional strategies aligned to state and national standards. Foundational Seminars are specifically designed for school teams, including administrators, arts educators, and classroom teachers. During an immersive two-and-a-half-days, educators leave equipped to bring creativity, innovation, and arts integration into the classroom across all content areas. Highlights include research-based strategies, participation in hands-on learning, and music, theatre, dance, visual arts, and digital/media arts demonstrations. Participants receive 20 professional learning contact hours.

This year, ArtsNOW hosted:



10+ Years and Growing Stronger Barrow County, Georgia

For over a decade, ArtsNOW and Barrow County School System have worked side-by-side to forge a true district-wide partnership for innovation and arts integration. With the Center for Innovative Teaching (CFIT) at the heart of the partnership, ArtsNOW leads this Research and Development Lab for continuous improvement.

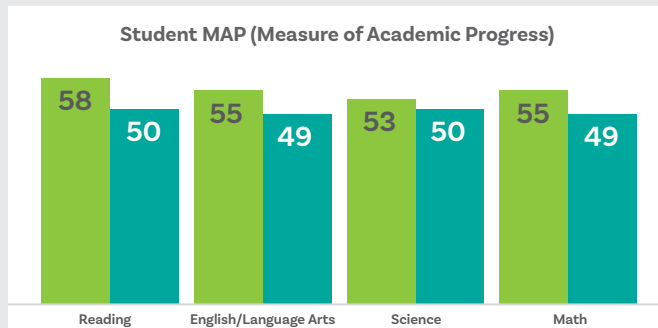
ArtsNOW and Barrow County Schools have grown our signature ArtsNOW Residency Program, working directly with students while simultaneously offering professional learning for educators. This partnership has been instrumental in the design and development of both the Barrow County Arts and Innovation Magnet (AIM) for grades 6-8, and the Barrow Arts and Sciences Academy (BASA) for grades 9-12.



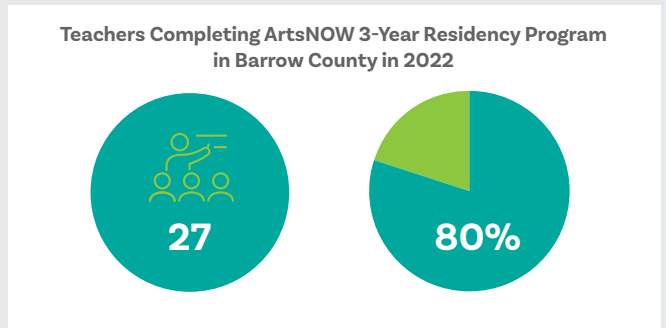
ArtsNOW's Longtime Partnership with Barrow County Schools

Scan the code or visit artsnowlearning.org/2022-annual-report/#partnerships to view video showcasing the impact of the ArtsNOW partnership with Barrow County Schools.

The data speaks for itself:



● Classrooms of ArtsNOW/Barrow County Teacher Leaders implementing arts-integrated strategies on a consistent basis
 ● Other classrooms



Number of Barrow County teachers completing program

The majority remain active teachers in Barrow County

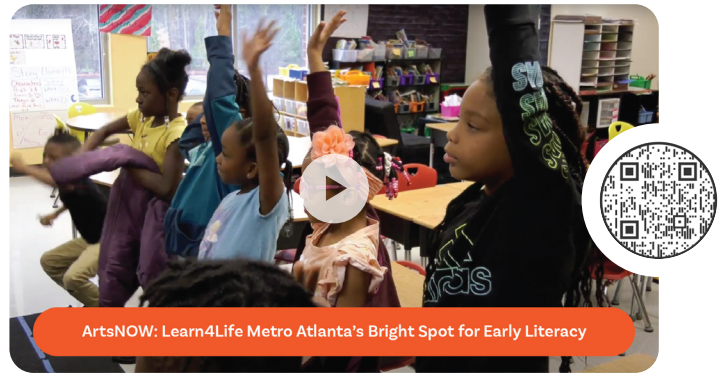
“ArtsNOW has been a true partner having real impact on the work we are doing across the district to make teaching and learning more engaging for our teachers and students, with documented results to show for it.” – Dr. Chris McMichael, Superintendent, Barrow County Schools



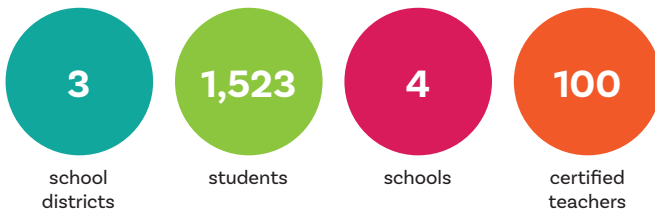
Shining Bright and Making a Difference Metro Atlanta, Georgia



In 2021, ArtsNOW was named as a Learn4Life Metro Atlanta's Bright Spot for Early Literacy, supporting and improving educator preparation and effectiveness. Funding from a private donor allowed ArtsNOW to provide two-year grants to four metro Atlanta schools that demonstrated the need to focus on literacy.



Scan the code or visit artsnowlearning.org/2022-annual-report/#partnerships to view video showcasing the impact of the ArtsNOW partnership with Learn4Life.

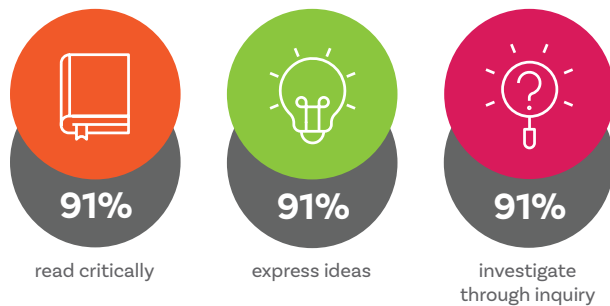


Learning Through the Arts South Carolina

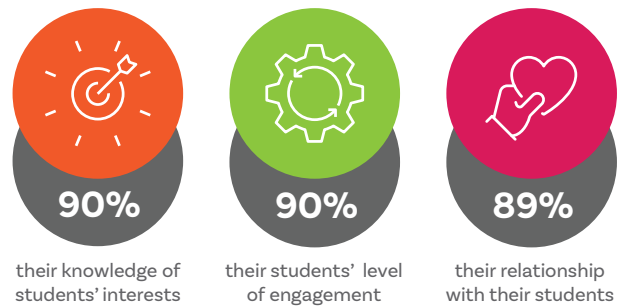
Arts Grow SC provides equitable access to learning in, and through, the arts for South Carolina students. Building on our mission to equip teachers, engage students, and grow school communities through arts integrated approaches, ArtsNOW is serving as a collaborative state-wide professional learning partner providing arts-in-education support

in underserved communities. Funded by the American Rescue Plan Elementary and Secondary Schools Emergency Relief (ARP ESSER) fund, Arts Grow SC will help public schools throughout the state address pandemic related learning loss with proven, arts-based learning initiatives.

The competencies most impacted by ArtsNOW professional learning were reported as:



Teachers reported that the professional learning had some or large impact on:



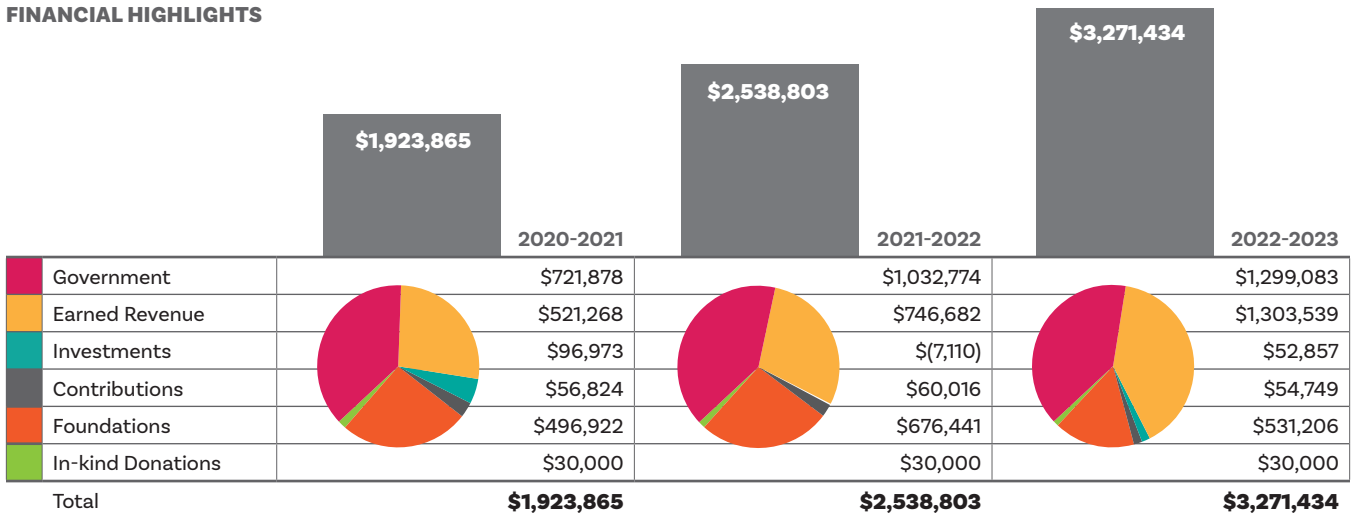
“The partnership with ArtsNOW has been remarkable! I’ve heard time and time again from our teachers that the ArtsNOW model for providing arts integration training is exactly how they learn best.” – Bradley D. Wingate, Director of Visual & Performing Arts, Greenville County Schools

To see more of our impact, visit the full Annual Report online!
Scan the QR code on the back cover or visit artsnowlearning.org/2022-annual-report.

Highlights of the Increase in Our Funding

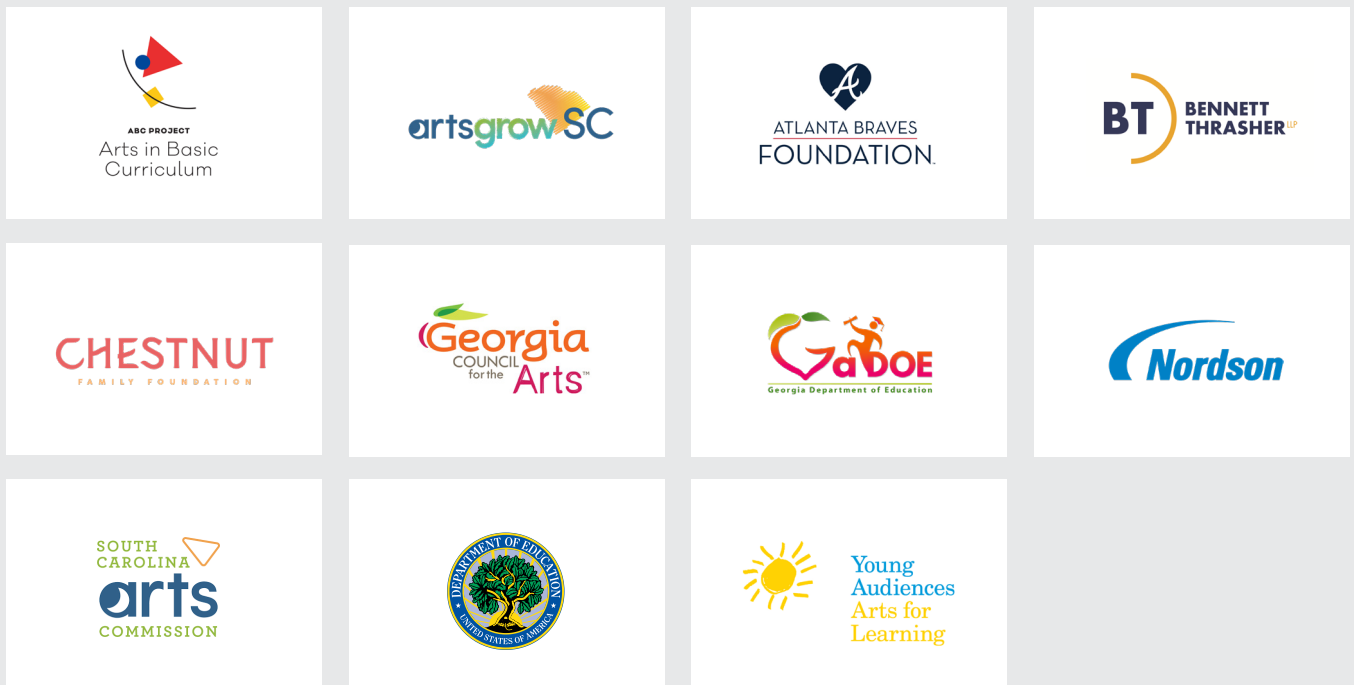
We continually strengthen our financial and organizational model to support our strategic development and expansion for professional and integrated learning.

FINANCIAL HIGHLIGHTS



Special Thanks to Our Financial Supporters

Our work would not be possible without the financial support we receive from foundations, universities, corporations and individuals throughout our community. ArtsNOW supporters are essential to developing and delivering integrated learning solutions to schools across our network.



TEAM & PARTNERS

Core Team

Pamela Walker
President & CEO

Crystal Collins
Executive Vice President
& COO

Regi Strickland
Regional Director

Shawn Williams
Regional Director

Lane Hall
Executive Assistant

Delores McDaniel
Business Manager

Kim Mercer
Project Manager

April Duffey
Project Coordinator

Kristin Mumford
Project Coordinator

Shenley Rountree
Director of Marketing
and Development

Jaffia Royes
Project Coordinator

Whitney Snuggs
Arts Integration Specialist

Artists and Consultants

Dance Consultants
Melissa Dittmar Joy
Laurin Dunleavy
Jay Jernigan

Theatre Consultants
Barry Stewart Mann, MFA
Susie Spear Purcell

Board of Directors 2022-23

Dr. Carol McGrevin, Chair
Partner, MCG Partners
Organizational Leadership
Consultant

Jill Robinson, Secretary
Chief Financial Officer
Atlanta Braves Organization

Rick Rosell, Treasurer
Partner, Bennett Thrasher, P.C.

Michael D.P. Cavanaugh
Group Executive, Indicor, LLC

Sherry Cohen

Lucinda Chapman
Trustee, Trinity School
(Atlanta)

Megan Howard Nellen
Confluence Educational
Consulting

David Shatz
Senior Principal of Arts &
Cultural Division, Blackbaud

Danna Vetter
Chief Marketing Officer
& SVP, Milliken & Company

Pamela Walker
President & CEO, ArtsNOW

Doris Kirby Winston
Chief Client Officer, Equifax
Strategic Financial Services

Music Consultants
Ashley Drake
Rue S. Lee-Holmes
Dr. Maribeth Yoder-White

Visual Arts Consultants
Shannon Green
Debi West, Ed. S, NBCT
Katy Betts
Taylor Spreeuwers

Advisory Council 2022-23

Michele Arwood
Executive Director,
Thomasville Center
for the Arts

Debbie Broadnax
Principal, Ford Elementary
School, Cobb County
School District

Chris Burke
Director of Community
Relations, Georgia Institute
of Technology

Lucinda Chapman
ArtsNOW Board Member

Elizabeth Cleveland
Community Representative

Sherry Cohen
ArtsNOW Board Member

Jaclyn Colona
Director of Grants Strategies,
Georgia Foundation
for Public Education

Stephanie Douglas
Assistant Director of
Community Relations,
Georgia Institute of
Technology

Patrick Fulbright
Area Director, Small Business
Development Center,
University of Georgia

Dr. Christina Kennedy
Principal, Hillside
Conant School

Barrett Coker Krise, CAP®
Partner, Bell Oaks
Executive Search

Jason Leming
Instructional Technology
Support, ArtsNOW

Doug Mancosky
Chief Science Officer,
HOI

Dr. Carol McGrevin
Board Chair, ArtsNOW

Dr. Chris McMichael
Superintendent,
Barrow County Schools

Melissa Morse
Founder and CEO,
Transform Learning

Megan Nellen
Confluence Educational
Consulting

Dr. Tamara Pearson
Senior Director of
Research and Programs,
Constellations Center
for Equity in Computing,
Georgia Institute
of Technology

Megan Schaeffer
Creative Director, ArtCloud

Heidi Turcotte
Program Director, CEISMC

Dr. Monika Wiley
Director of Fine Arts/School
Choice, Clayton County
Public Schools

Shawn Williams
Regional Director, ArtsNOW





Mission

The mission of ArtsNOW is to transform lives through customized solutions to meet educational needs utilizing arts-integration and innovative strategies.



Vision

ArtsNOW is the leading professional learning organization for resourceful and innovative approaches that engage students, equip educators, and grow school communities for meaningful impact on the future.

View the complete ArtsNOW Annual Report online!

For the full experience, scan this code or visit artsnowlearning.org/2022-annual-report.



artsnowlearning.org