



Newsletter | February 2024

Read how we have brought learning to life this month!

Richmond County, GA: Deer Chase, Garrett, and Warren Road Elementary Schools

ArtsNOW is incredibly pleased to serve three (3) additional schools in Augusta, Georgia! Thanks to the Chestnut Family Foundation, we have been in these new schools supporting teaching and learning through authentic arts integration. Teachers have participated in professional learning with music, theatre, dance, and/or visual arts. By the end of this academic year, each school will have experience with all four art forms and will send teams to Foundational Seminar this summer! We are beyond excited to see the continued growth and sustainability in the Augusta and Hephzibah regions.



Greenville, SC: ArtsNOW Principals' Network Conference Explored UnchARTed Arts Integration Opportunities

ArtsNOW was honored to host our second annual Principals' Network Conference, February 8-9, 2024, at Embassy Suites Downtown Greenville, South Carolina. The conference provided an excellent opportunity for principals in all stages of the arts integration journey to network with colleagues, learn from other principals and leaders, and hear about opportunities for their schools. [Click here to watch our video](#) celebrating this amazing event. Thank you to everyone who participated!



Jefferson County, Alabama: Visual Arts at Bryant Park Elementary

ArtsNOW kicked off our partnership with **Bryant Park Elementary School** in Jefferson County, Alabama, with professional learning and demonstration lessons with Visual Arts Consultant Shannon Green. Teachers learned strategies for arts integration through descriptive drawings and created artwork inspired by the artist Karen Singer. Students explored place value, measurement, area, and onomatopoeias by creating works of art in the style of various artists. Students were highly engaged in the lessons!



Beaufort, SC: Bringing Arts Integration to Middle and High Schools

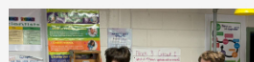
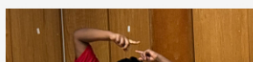
Making Music with MedTech

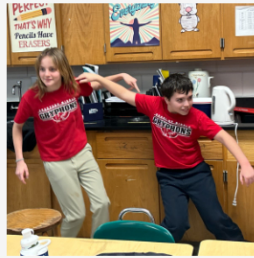
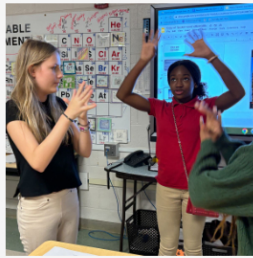
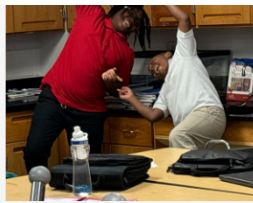
ArtsNOW Music Consultant Rue Lee-Holmes led students and teachers to create meaning through music at **Whale Branch Early College High School**. Teachers learned about the elements of art by singing, composing rhythms, and making content connections. Students integrated music into Spanish lessons by writing original song lyrics, while others made parallels between composing functions and composing melodies in Algebra.



Bringing Science Alive Through Dance

In a partnership with **Beaufort Middle School** in Beaufort, South Carolina, ArtsNOW Dance Consultant Melissa Joy helped students and teachers integrate dance to communicate what they are learning in science. Students collaboratively created choreography about weather systems and ecosystems, and then they reflected using vocabulary from dance and their science standards.





Reliving History Through Drama

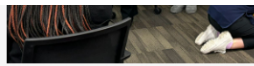
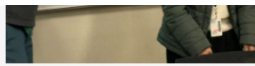
Beaufort High School students experienced the talents of Theatre Consultant Susie Spear Purcell during English. Students explored the Greek mythology themes of hubris and xenia by reading Homer's *The Odyssey*. Students created frozen statues via tableau which they brought to life with voice and shared their perspectives of the storyline.



Savannah, GA: THRIVE Professional Learning with SCCPS

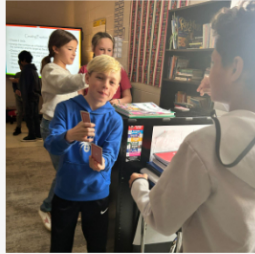
ArtsNOW Theater Consultant Barry Stewart Mann worked with new teachers in Savannah Chatham County Public School System at the THRIVE Professional Learning Conference. Through collaborative discussions, teachers connected their curriculum and theater strategies to build on critical thinking to motivate and inspire student learning.





Barrow, GA: We Got The BEAT!

SAIL (STEM + The Art of Integrated Learning) participants explored body percussions, rhythmic speech, and digital music notes under the guidance of ArtsNOW consultants Rue Lee-Homes and Maribeth Yoder-White. Teachers integrated music strategies into their math or science content areas. Students solved perimeter problems using sound fractions to strengthen their understanding of dynamics in music with soft (piano) and loud (forte) sounds. Students also developed musical compositions and rhythmic speech to explain scientific theories.



SC Arts Commission and Arts Grow SC Partners with ArtsNOW

Aiken, SC: Memorable Learning Through Music

Now in our second year of partnership, East Aiken School of the Arts and Oakwood-Windsor Elementary welcomed ArtsNOW Music Consultant Rue Lee-Holmes to create meaning through music. Teachers made rhythmic compositions and learned about art elements. Students participated in strategies like "Hear, Think, Wonder" and "Draw to Music." Students also identified fractions in musical compositions and collaborated to create rhythmic speech compositions to identify themes.



Anderson, SC: Where Math Takes Form

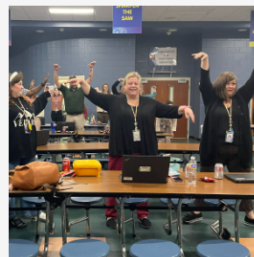
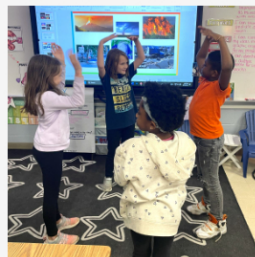
Visual Arts Consultant Katy Ratts brought number sentences to life with

Visual Arts Consultant Katy Davis brought number sentences to life with students at **Homeland Park Primary**. After reading Eric Carle's book *The Tiny Seed*, students created flowers with removable construction-paper petals to create a subtraction problem. Students completed their number sentences and artwork by adding wind, sun, rain, and soil via oil pastels.



Mauldin, SC: **Creating Meaning with Movement**

Mauldin Elementary School teachers and students danced through their learning this month. Teachers helped students move through shapes, grammar, and the Westward Movement. Kindergarten students created choreography to make groups of ten. Second graders showed characteristics of natural disasters through dance, while fifth graders explained complex sentences through choreography.



Did someone forward you this email? You deserve your own copy. [Click here to sign up for our newsletter](#). You can also share this newsletter with an educator, administrator, or donor who should know about ArtsNOW!



Copyright © 2020 ArtsNOW. All rights reserved.

Our mailing address is:
10 Glenlake Parkway, Suite 130, Atlanta, GA 30328

Want to change how you receive these emails?
You can [update your preferences](#) or [unsubscribe from this list](#).

